

TOP 5 RESIDENTIAL ELECTRICAL DEFECTS

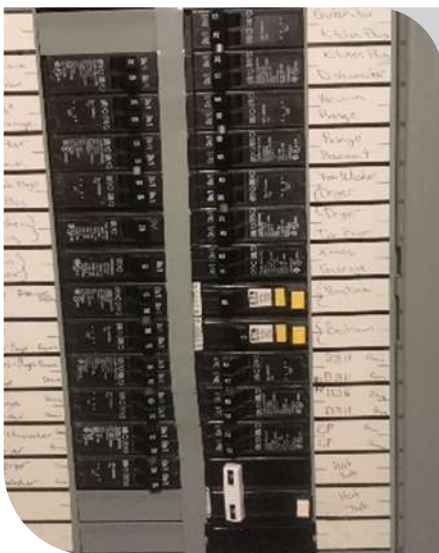


EQUIPOTENTIAL BONDING OF NON ELECTRICAL EQUIPMENT

1

63 DEFECTS WERE FOUND FOR NOT BONDING THE GAS LINE:

- The gas line bond reduces the risk of a shock and/or spark on the gas line by providing a safe electrical path to ground.



MARKING OF EQUIPMENT

2

60 DEFECTS WERE FOUND FOR NOT LABELLING THE ELECTRICAL PANEL PROPERLY

- In case of emergency, or for maintenance purposes, homeowners must be able to identify what is being served by each breaker.

3

GROUNDING CONNECTIONS



46 DEFECTS WERE FOUND FOR NOT GROUNDING THE A/C SERVICE:

- Grounding the service as close as permitted to the utility connection prevents parallel paths, and a direct line for a fault, ensuring breakers trip properly.

4

ARC-FAULT PROTECTION



43 DEFECTS WERE FOUND FOR CIRCUITS NOT BEING PROTECTED BY ARC-FAULT:

- Arc-fault protection reduces the risk of electrical fires by detecting dangerous arcs in the wiring, and immediately breaks the flow of electricity to that circuit.

5

MISSING GFCI RECEPTACLES



34 DEFECTS WERE FOUND FOR MISSING GFCI RECEPTACLES:

- GFCI protection is required for receptacles that are installed within 1.5 M of a sink.
- These provide protection from electricity by shutting off the power in the event of a ground fault.